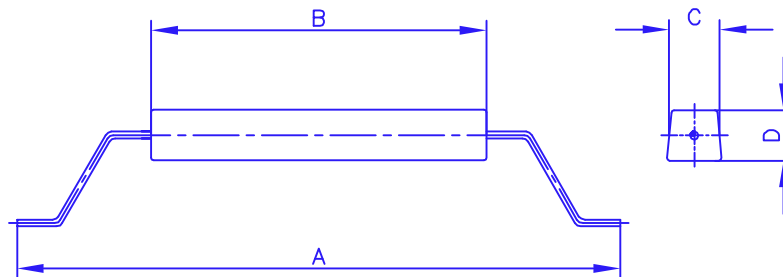
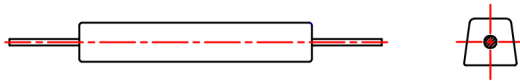


ZINC TANK ANODES

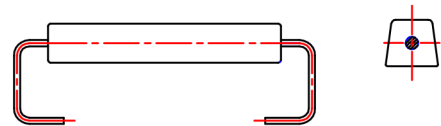


TYPE	A	B	C	D	insert	weight	
						net	gross
T- 24-Z-dc	670	400	30	30	∅ 8	2,4 kg	2,7 kg
T- 43-Z-dc	430	250	50	50	∅ 8	4,3 kg	4,6 kg
T- 73-Z-dc	920	580	40	40	∅ 8	7,3 kg	7,7 kg
T-100-Z-dc	920	575	50	50	∅ 8	10,0 kg	10,4 kg
T-120-Z-dc	1390	1100	40	40	∅ 8	12,0 kg	12,6 kg
T-128-Z-dc	550	370	70	70	∅ 8	12,8 kg	13,1 kg
T-153-Z-dc	920	600	60	60	∅ 8	15,3 kg	15,8 kg
T-220-Z-dc	1390	1100	68	56	∅12	22,0 kg	23,4 kg
T-280-Z-dc	1850	1500	52	53	∅12	28,0 kg	29,8 kg
T-320-Z-dc	1550	1200	63	63	∅12	32,0 kg	33,5 kg
T-408-Z-dc	1850	1525	64	64	∅12	40,8 kg	41,6 kg
T-440-Z-dc	1550	1100	50	118	∅12	44,0 kg	45,5 kg
T-470-Z-dc	1550	1100	80	80	∅12	47,0 kg	48,5 kg
T-475-Z-dc	1550	1200	76	76	∅12	47,5 kg	49,1 kg
T-570-Z-dc	1550	1100	85	90	∅12	57,0 kg	58,6 kg
T-668-Z-dc	1310	935	100	100	∅12	66,8 kg	68,2 kg
T-780-Z-dc	1675	1100	100	100	∅12	78,0 kg	79,5 kg

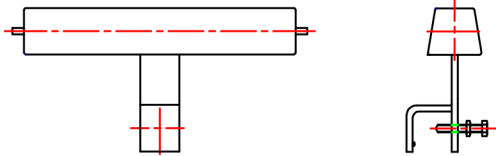
FIXING OF TANK ANODES



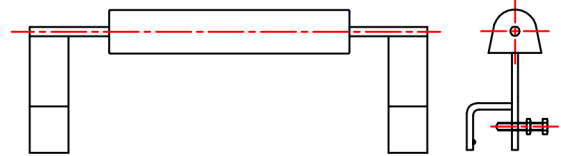
straight core



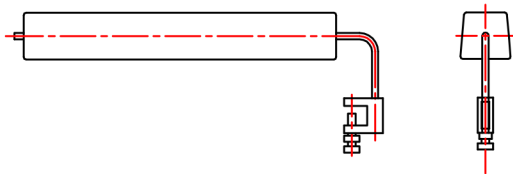
inside double cranked



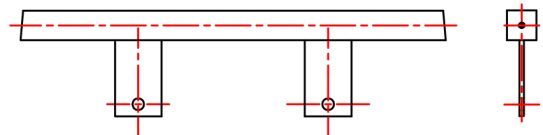
"C" clamp



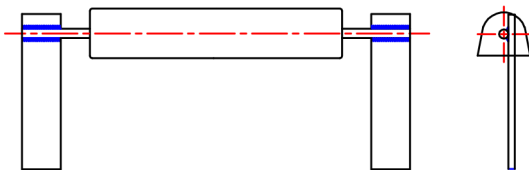
"E" clamp



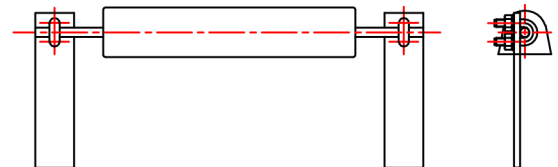
pitguard clamp



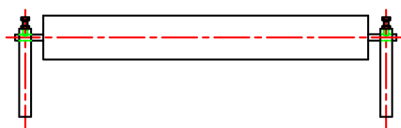
"S" type bolted to brackets



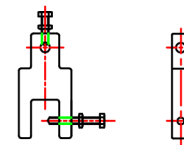
stand-off brackets, welded fixing



stand-off brackets. U-bolt fixing



bar clamp



"M" type clamp

The above are standard fittings which meet the most requirements
out special fittings will be designed where necessary!